

YACHTS

EMIRATES

CALIXAS C2 A NEW BREED OF TRAWLER

DUBAI BOAT
SHOW REVIEW
NEW LAUNCHES AND MORE

MAN MADE
ISLANDS
HOW PHARAONIC
AMBITIONS ARE ACHIEVED

INFINITE IMAGINATION
INNOVATIVE ELEMENTS FOR CUSTOM YACHTS

DUBAI TO BUILD
MEGAYACHTS
PLATINUM YACHTS AND SAM SORGIOVANNI

FRESH TALENT
MEET PALM MARINE'S NEW ACE

ALSO TESTED

FERRETTI 831 RPH • OCEANCO 82 METER • MARQUIS 690
ASTONDOA 76 • SANLORENZO 40 M • FAIRLINE 58 SQUADRON



Calixas 

CALIXAS C2

COMBINED EFFORTS

AN EARLY SNOW FELL ON GREG MARSHALL'S REMOTE VANCOUVER ISLAND FARMHOUSE. TUCKED AMIDST THE APPLE ORCHARDS, THIS TINY WOOD FRAME HOME WHERE AN APPLE PIE BELONGS COOLING ON THE SILL, IS THE DESIGN HQ THAT HAS HATCHED A GLOBETROTTING FLEET OF OCEAN GOING YACHTS, INCLUDING THE LATEST, CALIXAS 105. ITS PANORAMIC VIEWS REVEAL AN ORCHARD DUSTED IN SNOW STRETCHING TO THE SKYLINE OF GLACIER-STUDDED OLYMPIC MOUNTAINS ACROSS THE STRAIT AND THE U.S. BORDER. BUT WE CAN ENVISION THE VAST WINDOWS ALSO EXPOSING EQUALLY IMPRESSIVE VIEWS OF OMAN'S HAJAR MOUNTAINS OR ABU DHABI'S STRING OF NATURAL ISLANDS.

Story and Photos Neil Rabinowitz





The dining room doubles as a board room with a pull down projection screen above the round window.





The skylight was inspired by the large round windows seen in the dining room and master stateroom.

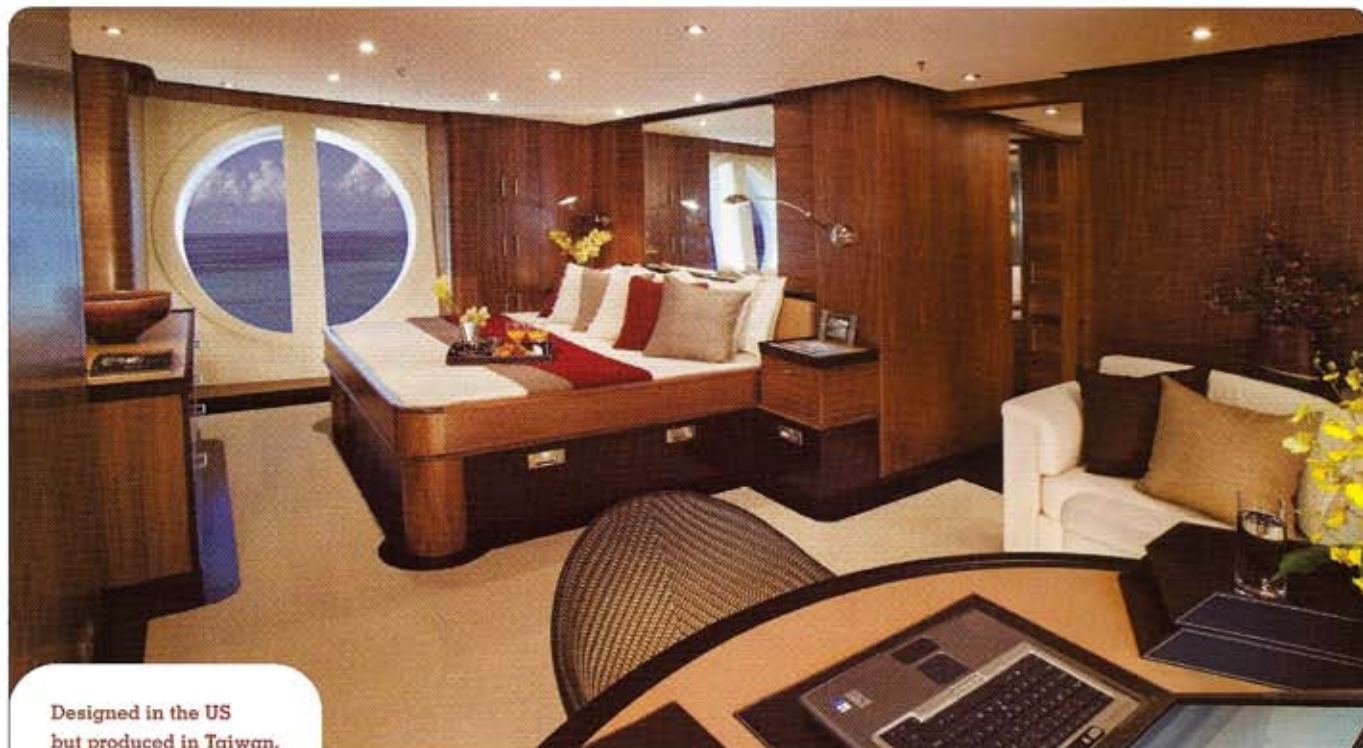


INSIDE, THE OFFICE BUSTLES WITH DESIGN ACTIVITY,

a stack of international flight schedules pile the desk as a squad of creative types come and go, focused on projects, while several large flat screens reveal digital details of a variety of yachts under construction in distant corners of the globe. "I turned the sunporch into my own office," says Marshall. "We're off the beaten path but our pastoral spot has few distractions... we'd never trade it for the corporate world." A low profile, round faced, red-haired cherubic Canadian, Marshall has worked on the design and styling of many yachts since the 80s. His start was with Bill Garden, then Ed Fry and now on his own. His projects include Westports, Horizons, and San Juan's line of elegant speedsters. Humble, and softly sincere, Marshall has a talent for lines and for shaping a project.

His lead in the Calixas episode is Montie Twining, a Texan with a high tech background. Friends for over twenty years, he and Marshall form an unorthodox pair of yacht designing entrepreneurs who have produced Calixas, a yacht both creative in design and innovative in its production.

Marshall was working with Fryco Design when he met Twining, who had grown up around boats in the Gulf of Mexico and turned to technology while Marshall pursued yacht design. Their careers took different tracks but friendship kept them in contact, sharing design ideas and casual collaborations. "Greg's career seemed more playful and I always wanted to know more about his design projects," Twining said. "Nearly 25 years ago, just kids, we toyed with a motor sailor design. Greg took it seriously and I just wanted a boat to fall in love with. We both knew our talents would someday collaborate but it wasn't until three years ago that I called Greg up with Calixas in mind."



Designed in the US but produced in Taiwan, the Calixas C2 was built with the help of specialized computer software: Calixas.net.

The name symbolized a blend of California and Texas, and the plan was to put into production six 105' boats, with the most eco-friendly systems, as an MCA-classed vessel. Only recently had SCRIMP technology been brought to Taiwan, so with that consideration Twining and Marshall approached the Taiwan-based Horizon Yard with the concept of a half dozen like yachts over a few years. It became a partnership where the design and project identity would be a private label dictated by both Twining and Marshall without compromise. Its hull combines corecell composite with its decks a blend of balsa, and a mast of both aluminum and composite. It has modest CAT 3406 E's producing a stable, fuel efficient 14-knot top and 11-knot cruising speed for a 3000 mile range with 6000 gallons.

Project managers have long utilized on-site digital photos, linked to other parties involved with construction, but Twining's Calixas.net became a patented new entity all its own—computerized project management that ultimately organized infinitely large files, which 100 people in 100 lifetimes could never digest, into instantly accessible sites and made information available anytime, anywhere. This kind of technology promotes the globalization of yacht design and production, which could impact the Mideast's participation in the yachting world as labor here tends to be cheaper than other regions. Calixas employed New Zealand craftsmen from SMI to fabricate component joinery. Walnut paneling with quarter sawn radiuses and flat cut feature panels with Wenge accents and flooring made for a rich, dark interior. Large circular windows on port and starboard of the master stateroom and dining saloon became a theme throughout that inspired a solarium skylight in the skylounge.

"I saw our building in Asia as initially presenting time zone problems," explained Twining. "From that concept the project became a fortuitous crossover playing on my core set of skills. Every shipyard employee, contractor, supplier, designer and delivery agent gets info from the same source satisfying parts, purchase orders and quotes."

Calixas features a full-beam, on-deck master, with guest staterooms below decks and the captain's quarters above, a real bridge and adjacent office, and multiple onboard social spaces that could service both family and corporate needs. The dining saloon doubles as a boardroom with pull down projection and a conference style stainless and glass table with Wenge accents. The master windows bring the seascape down to an intimate level and the suite features its own private foredeck companionway. Through the hatch is a comfortable foredeck seating area with polished stainless



Walnut paneling and Wenge accents offer a rich atmosphere throughout.

YACHTS



With modest CAT 3406 E's, she is a stable, fuel efficient yacht with a 3000 mile range with 6000 gallons.



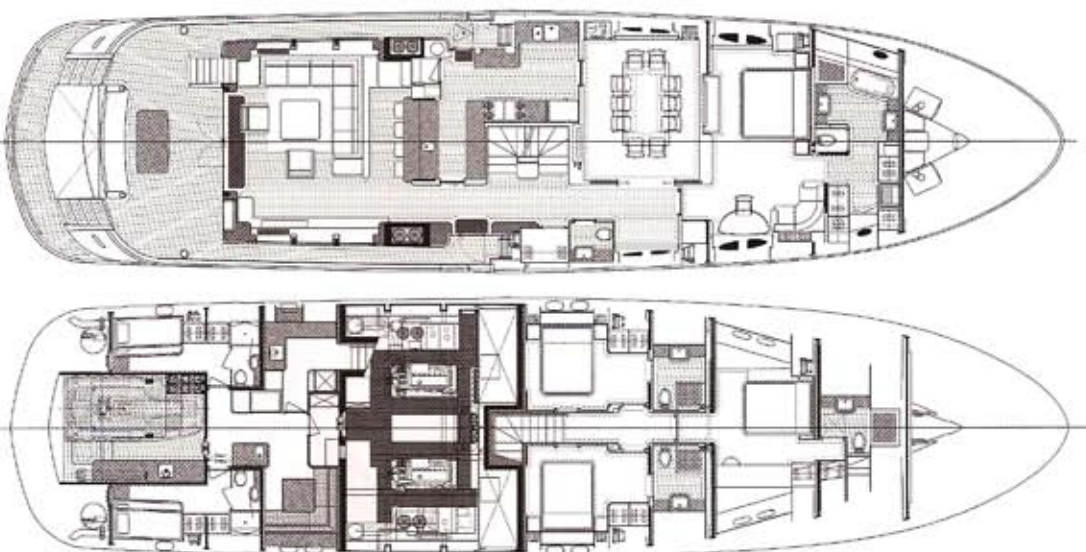
anchor capstans and hardware to complete the experience. One of the nicest areas on board while quietly underway, it also provides a retreat during those stern-to Med ties. In addition to the master there are three guest state-rooms below plus a maple-appointed crew quarters aft.

The portside galley has quartz composite counters and is small but functional with an open buffet to the saloon. Topside is a sky lounge with full bar, game table and wraparound settee. Through the office and navigation station is the wheelhouse with a large leather settee and padded Majilite dash and mullions with reverse bridge windows. Abundant sound insulation, assisted by the engine room design, creates a quiet ride in both the main saloon and aft deck. Often one of Marshall's design office's most polished treatments on board, it is roomy, with a sealed electronics vestibule which reduces sound and heat, and makes for happier electronics panels. "Greg has a gift for design while mine is building and organizing," said Twining. "For me this endeavor has always been 99% business and 1% passion. But then I'm passionate about business so that's why I have been driven to obsession in this project. I'm not in love with boats, but I am enamored with the potential to provide an unmatched rewarding experience to people. The sort of rich experience that only owning a yacht could provide, and Calixas has personalized that quest and made it my mission. That motivates me."

Like two wound up whiz kids putting their heads together after school, stumbling on something new and excitedly making their computers dance, the result of their collaboration was the Calixas 105', which appeared in full model form on screen and just yearned to be built.



Sound and heat are reduced in the wheelhouse, benefitting both the equipment and the captain.



LOA: 32,00m
Beam: 8,40m
Draft: 2,40m
Displacement: 190 tons
Fuel Tank: 24.500 liters
Water Tank: 1.420 liters
Engines: 2x CAT 3406E
Top Speed: 13 Knots
Range: 1620 miles

Contact: www.calixas.com

YACHTS